



Essilor Anti-Fatigue™ Advanced Single Vision Lenses

Relief for hard-working eyes



FOCUS ON VISUAL FATIGUE

Eyes that sting and feel tight, headaches, blurred vision: these are all ways of describing VISUAL FATIGUE.



- **Visual fatigue** is a problem that busy people are acutely aware of. It affects more than **60%* of individuals**, whether their eyesight is corrected or not
- This is a phenomenon caused by many factors related to our lifestyle and activities, which increasingly require the **prolonged use of intermediate/near vision**. Visual fatigue is a **frequent occurrence** that many patients experience every day

Essilor has launched the **first anti-fatigue prescription lens** for all single vision wearers whatever their correction, and more specifically wearers aged 20 to 45 who suffer from visual fatigue.

* Source: Omnibus/BVA surveys conducted for Essilor in October 2004 on a sample of 2,760 people aged between 20 and 45 years old (wearers and non-wearers) in France, the United States and Japan.

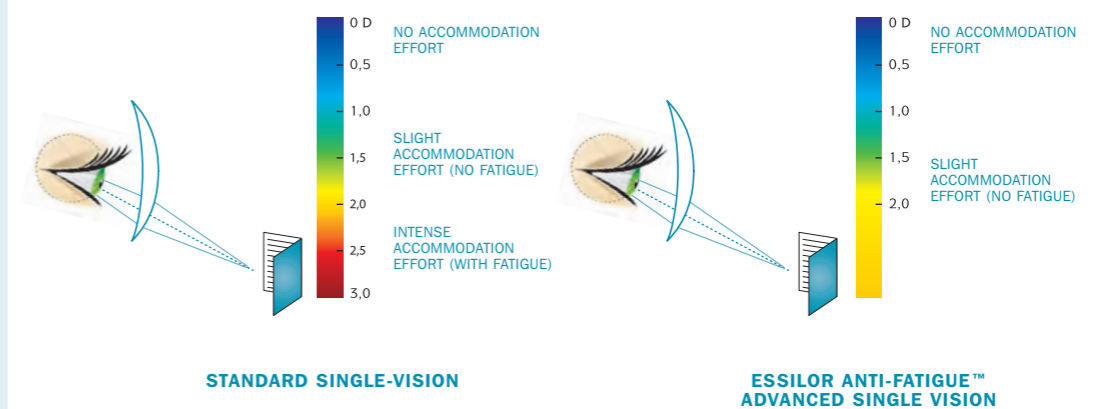
ESSILOR ANTI-FATIGUE™ LENSES: AN UNPRECEDENTED INNOVATION

- **Essilor Anti-Fatigue™** is a new-generation of advanced single vision prescription lenses that give relief to hard-working eyes in addition to correcting their vision
- **Its patented design** supports the wearer's accommodation efforts and thus relieves **visual fatigue**, thanks to:
 - a slight additional plus power at near vision
 - optimal aspherisation for instant adaptation
- The lens provides much greater comfort than a standard single-vision correction, as the wearers' **natural accommodation pattern is retained**
- What's more, **Essilor Anti-Fatigue™** lenses are available with a **Crizal Alizé** coating for greater transparency and better contrast

PERFECT WITH **Crizal ALIZÉ™**

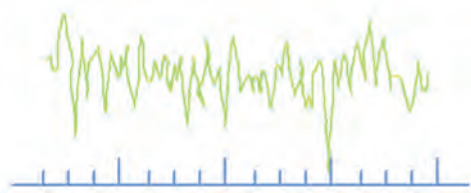
Essilor Anti-Fatigue™ lenses require less accommodation effort at close range compared to a standard single-vision lens.

MEASUREMENT OF NEAR-VISION ACCOMMODATION EFFORT



THE ANTI-FATIGUE™ EFFECT: HOW DOES IT WORK?

NORMAL STATE



HIGH AMPLITUDE
OF MICRO-FLUCTUATIONS

When the eye focuses on a fixed target, the resulting accommodation is not constant: it varies around an average value, like with an auto-focus camera. These variations are called **accommodative micro-fluctuations**; they are imperceptible and uncontrollable.

VISUAL FATIGUE

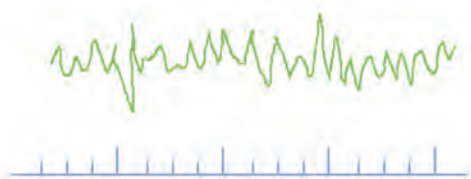


LOW AMPLITUDE
OF MICRO-FLUCTUATIONS

THE ACCOMMODATION SYSTEM HAS
DIFFICULTY SUSTAINING ITS EFFORT

When the eyes get tired, these micro-fluctuations practically disappear, which shows that the accommodation system has greater difficulty sustaining its effort. **These micro-fluctuations provide the best objective evidence of visual fatigue.**

ANTI-FATIGUE EFFECT



THANKS TO **ESSILOR ANTI-FATIGUE™ LENSES**,
THE ACCOMMODATION SYSTEM
REGAINS ITS BALANCE

Essilor Anti-Fatigue™ lenses help to restore the micro-fluctuations and retain the balance of the accommodative system, for fatigue-free vision.

ESSILOR ANTI-FATIGUE™ LENSES: WHO BENEFITS MOST?

- Patients between the age of 20 and 45 (pre-presbyopic age)
- Patients that spend more than 3 hours a day working at close range e.g. reading, computer work etc
- Patients that complain about experiencing visual fatigue whether they wear prescription spectacles or not

Please note Essilor Anti-Fatigue™ advanced single vision lenses are unsuitable for patients under 16 and patients with significant exophoria.



- **Essilor Anti-Fatigue™** lenses completely replace standard prescription lenses whatever the patient's ametropia, without changing their natural behaviour, whether they are permanent or occasional wearers
- **Essilor Anti-Fatigue™** has a slight built-in variation in power (+0.60 D) to support the wearers accommodation for close range tasks throughout the day



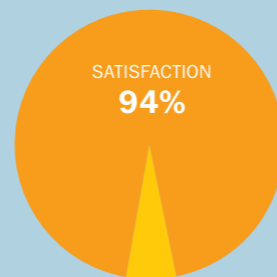
CLINICAL TESTS: PROVEN EFFECTIVENESS



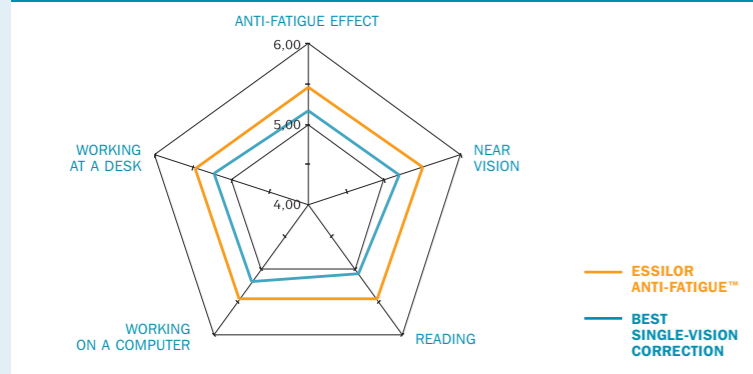
We compared **Essilor Anti-Fatigue™** advanced single vision lenses to a standard single-vision lens (same index, correction and anti-reflective coating) in a double blind study*.

These clinical tests proved the clear superiority of Essilor Anti-Fatigue™ lenses:

- **Essilor Anti-Fatigue™** lenses were used in exactly the same way as their current spectacles (constant or occasional use)
- Adaptation was as fast and easy as with a standard single-vision lens
- 94% of wearers were totally satisfied with regard to near, distance and dynamic vision alike



ON A SCALE OF 1 TO 6
(1 = VERY POOR, 6 = VERY GOOD)



7 out of 10 wearers preferred this lens to the best single-vision correction** for its visual comfort, the quality of its near vision correction and its anti-fatigue properties.

* Wearer test conducted by Anglia Ruskin University (Spring 2004 - 98 wearers aged 20-45)

** Stylis Crizal lenses with identical prescriptions

TECHNICAL FEATURES

Lens Design

- **Aspheric design advanced single vision lenses, with an additional +0.60 D in the lower power of the lens**
- **No perceivable distortions**

Ordering

Use full distance Rx.

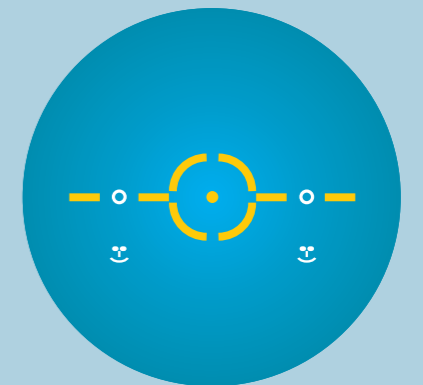
Markings and Engravings

Horizontal Centration

Use monocular distance PD.

Vertical Centration

Line up the mounting reference point with the pupil centre. (The mounting reference point can be located up to 2mm below the pupil). Specify R and L fitting height when ordering.



ENGRAVED LENSES FOR EASIER IDENTIFICATION



Essilor Anti-Fatigue™



Essilor Anti-Fatigue™ Range

MATERIAL	CRIZAL ALIZÉ	TRIO GREEN	SUPRA	UNCOATED	DIAMETER	POWERS
ORMA 1.5	YES	YES	YES	YES	60,65,70,75	-6.00 TO +6.00 CYLS TO 4.00
STYLIS 1.67	YES	NO	NO	NO	65,70,75	-10.00 TO +6.00 CYLS TO 4.00

Where to order Essilor Anti-Fatigue™ Lenses

Essilor Anti-Fatigue lenses can be ordered directly from Essilor, through a Varilux Specialist Laboratory or a Wholesale Glazing Partner.

Issue Code 06.06

ESSILOR LIMITED, COOPER ROAD, THORNBURY, BRISTOL BS35 3UW
WWW.ESSILOR.CO.UK
GENERAL ENQUIRIES 01454 417100

57-02-016

